

CMI223 Automotive

Multi-Faceted for All Welding Situations

Stepless, digital, compact

Car-O-Liner's CMI223 is a stepless, totally digital welding machine with advanced welding qualities which give synergy between the parameters and the automatic functions. It is extremely user friendly. Simply adjust the main parameters and the machine will quickly optimize the rest — you'll be operational in no time!

The super versatile CMI223 Automotive can handle all types of MIG/MAG welding, from the most demanding to the simplest, using small or large wire reels.



MIG-brazing

The Automotive i-series also is equipped to handle with finesse the delicate task of MIG-brazing of galvanized steel plates. MIG-brazing insures that the material's corrosion and strength qualities are maintained to the highest degree. This minimizes the need for extra finishing of the plates and profiles, which increases profits and effectivity in the workplace.



Step free MIG/MAG inverter with built in advantages

In order to achieve the greatest possible quality in MIG/MAG-welding the Automotive i-series is equipped with a permanent 4-wheel drive that ensures a precise and stable wire feed. It is characterized by perfect arc ignition — every single time — and unique welding qualities, using either CO² or mixed gases.

No matter if you are welding in black steel or aluminum.

FEATURES & BENEFITS

- Compact, easy to use
- Matches new materials and individual user-patterns in all welding environments
- Synergy program decreases the risk of error
- MIG-brazing for galvanized steel
- 4- wheel drive with sure-grip
- Standby (30 W) saves energy, CO² and increases the lifetime of the machine

CMI223 Automotive Twin

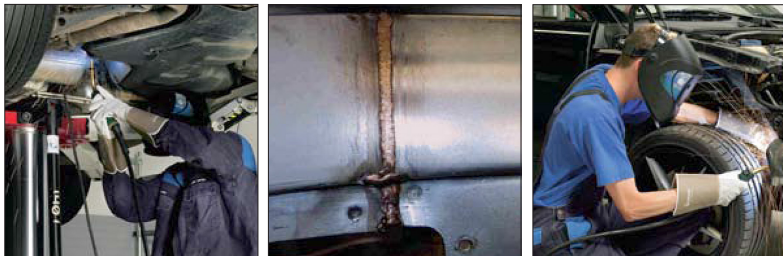
Two wire reels, one for MIG soldering and one for all other types of welding, make it easy to move between welding processes without the need to change the hose, wires, wire feeder or gas tubes.

CMI223 Automotive Twin - allows quick movement from one welding moment to another



MIG-A Twist® the new firing generation

The rotatable swan neck gives ultimate functionality and comfort. MIG-A Twist, with or without adjustment from the welding handle, is the ultimate match to the Automotive machine's function panel. *Ignite – push – weld!*



Technical data

	CMI223 Automotive	CMI223 Twin Automotive
	Art. No. 43799	Art. No. 43800
Input Voltage +/- 15%	3 x 400V	3 x 400V
Fuse	10 A	10 A
Duty Cycle 100% at 40°C	145 A	145 A
Duty Cycle 60% at 40°C	170 A	170 A
Duty Cycle 100% at 20°C	180 A	180 A
Duty Cycle 60% at 20°C	220 A	220 A
Current Range 10-220	10-220 A	10-220 A
Protection Class	IP23	IP23
Norm	EN60974-1/5/10	EN60974-1/5/10
Dimensions HxWxL, cm	55x25x64	96x57x87
Weight, kg	25	54



For quick and easy up-dating of the software the Automotive i-series has a built in program reader placed within easy reach and well protected at the

back of the side panel near the wire box.



Follow us on Facebook



Discover us on car-o-liner.com



Watch us on YouTube



CAR-O-LINER®

Your safety - our mission

CAR-O-LINER is recognized for its leadership in the marketplace by continuously delivering high quality products and exceptional customer service.

Distributor

www.car-o-liner.com