

EXCELLENCE IN
COLLISION REPAIR



In 1973, Car-O-Liner® was the first to introduce a universal repair bench, and in 1990, the first to introduce a computerized electronic measuring system. Today, Car-O-Liner is the best-selling collision repair equipment in the world. With more than 25,000 Car-O-Liner collision repair systems in use throughout the world – all backed by a distributor network spanning 50 countries whose members are selected on the basis of their knowledge of the auto collision repair business and their ability to provide superior service to Car-O-Liner customers. Car-O-Liner is the best selling because it's the best made, the easiest to learn, the simplest to use, the best backed, and the most productive – and productivity means profits.

CAR-O-LINER®

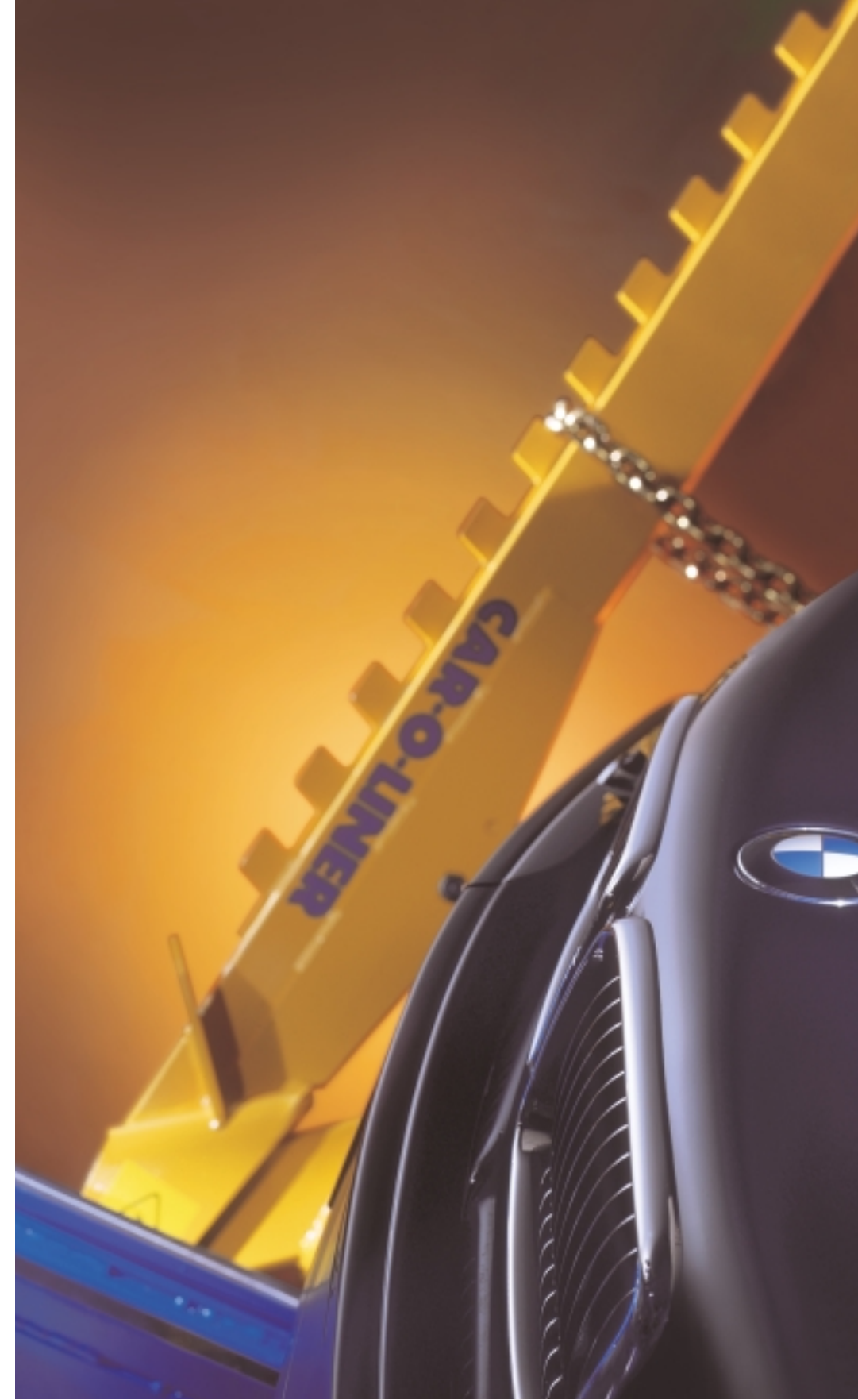
Car-O-Liner® Company
29900 Anthony Drive
Wixom, MI 48393-3609
1-800-521-9696

Fax: 248-624-9529
e-mail: info@car-o-liner.com
Internet: www.car-o-liner.com

1330100021 Printed in Sweden by LT-Tryck Civil. November 1999.

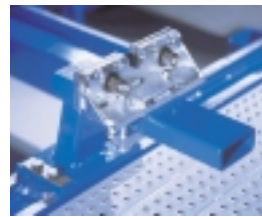
BenchRack™

CAR-O-LINER®



RACK UP THE PROFITS

With several models to choose from, Car-O-Liner's BenchRack™ system can be tailored specifically for your shop. The BenchRack combines drive-on convenience with a hydraulic lift and removable ramps. A revolutionary tilt feature that makes loading easier when approach space is limited is available on all BenchRack models. All BenchRacks share a single purpose: they allow for faster set-up times, repairs and inspections. To give you more productivity – more profits.



The universal clamp and bench mounting combination provides the strongest no-slip holding capacity for unibody vehicles.



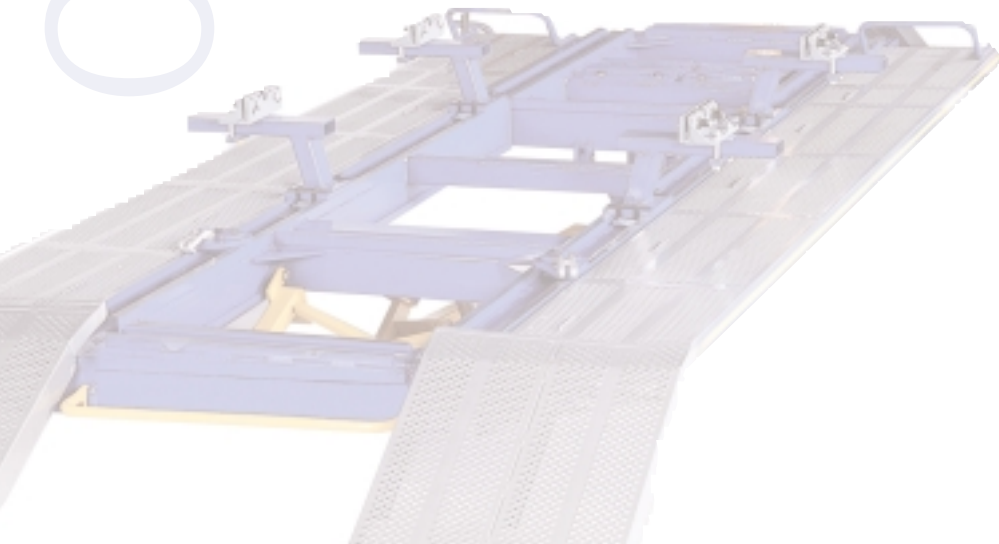
Down pulls are made easy with the D91 support system component.



Exclusive pillar jacks make mounting of trucks fast, safe and easy.



Powerful 10-ton Draw-Aligners pull from almost any angle 360° around the vehicle.



The loading trolley allows you to load immobilized vehicles and can also be used as a vehicle safety stop (just flip it over).



Removable ramp sections lift out easily to give better access to the vehicle.



When repairing minor damage, the vehicle can be quickly anchored using B631 chain holders.



Side support system locks parts in place when pulling, or holds them in place during welding operations.